

## Swiftpro<sup>®</sup> L10 & L10D

### Inline Laminators

Inline Laminators provide enhanced security and durability and longer card lifecycle into your card program to help your customers protect against fraud and counterfeiting. For elevated security applications for a multitude of vertical markets, rely on KIS Global to provide and deliver a higher level of options providing customers with flexibility with a reputation for excellence, innovation and development.

Entry-level or scalable security features to adapt to each individual vertical market applications:

- Offer a range of overt and covert security features such as Microprint, Mechanical Hologram images, Guilloche patterns, Laser Retrievable features making it more difficult to compromise your card programs
- Range of Overlays and laminates with different durability levels
- Giving our customers flexibility is key to address different pain and cost points
- Single-pass single and dual sided lamination options and intuitive supplies loading makes this an ideal customer-friendly laminator

Solutions for every card substrate:

- Whether the project involves PVC, Polycarbonate or one of many other available substrates, we produce high quality holographic and printed security features that can be incorporated into the document to ensure its security and reliable authentication.



#### SECURITY

A range of holographic laminates and overlays to protect your card program from counterfeiting and fraud.



#### VERSATILITY

Swiftpro's modular design permits customers to upgrade as their card programs need changes.



#### IMAGE QUALITY

High Resolution printing using 300 and 600dpi printing provides superior print quality for all your card programs.



#### RELIABILITY

Swiftpro K-Series are well respected globally for their Japanese engineering for quality and reliability.



#### INNOVATION

Innovating since the 90's with state of the art retransfer printers, providing safe, secure, and reliable ID card printer solutions to global organizations since 1989.

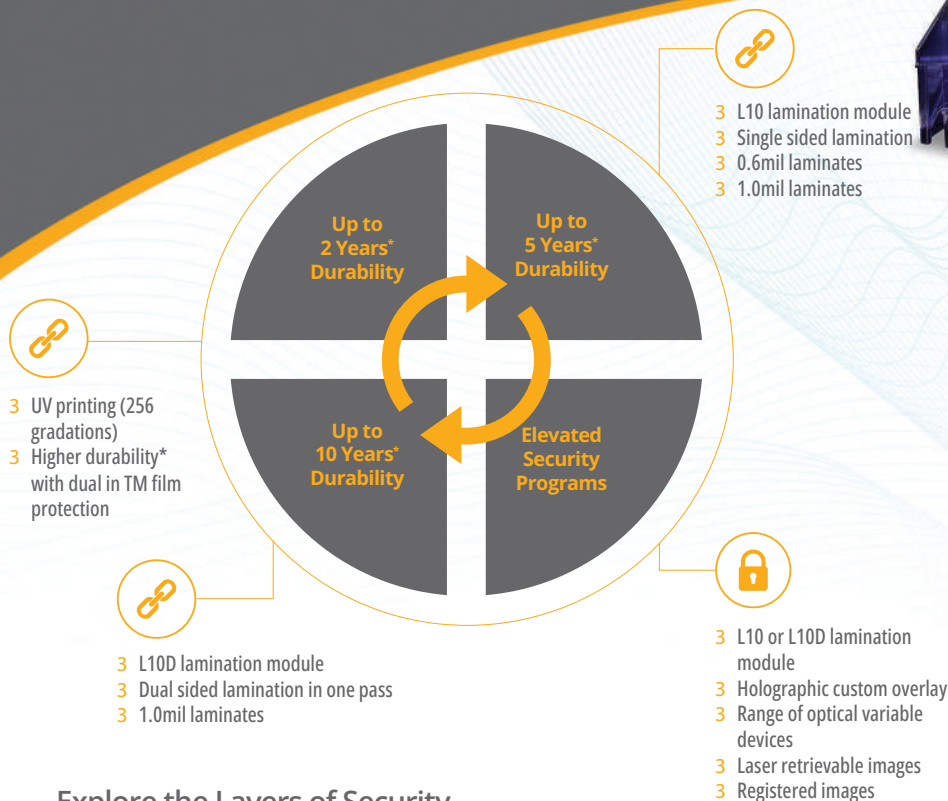


#### DURABILITY

Highly durable printers with industry leading warranties on all our products and lifetime on the print head.

# Swiftpro L10 & L10D

## Inline Laminators



### Laminator Specification

Single Sided Lamination

Dual Sided Lamination

Use Genuine Swiftpro Generic and Custom Laminates and Overlays

Single pass laminating for Dual sided Lamination

Use Custom and Generic Stock for same application (Front and Back)

### Electrical

Temp +15°C - 28°C

Humidity 35%RH - 60RH (No Condensation)

AC100V - 240V

Wattage 170w L10 and 260w L10D

### Physical Specification

Height: 360mm Without Card Stacker

Width: 210mm Without Card Stacker

Depth: 330mm Without Card Stacker

Weight: 8.5 KG (L10) 9.5 KG (L10D)

### Card Specification

Card Thickness 30mil

Card Size ISO 7810 Format, CR80, ID-1

Card Material: PVC, PC, PET, PET-G

Technology Cards Contact and or Contactless with and without Mag Stripe

### Features

Compatibility with K-Series Retransfer Card Printers

Color Coded Supply Cartridges and Intuitive Supply Loading for Easy Loading of Lamination Supplies

Up to 2, 5 or 10 years durability\*

Plain and Generic Hologram Options Available

Custom Overlays and Laminates for Enhanced Security

\* Up to 2, 5 or 10 years depending on card usage and application.

## Explore the Layers of Security



### Level 1

- 1 High Resolution Lines with Kinetic Effect
- 2 2D and 3D dimensional hologram
- 3 Wireframing
- 4 Fine Line Guilloche Patterns
- 5 Matt Finish



### Level 2

- 1 MicroText
- 2 2 or 3 Channel Switch Effect
- 3 90° Viewable Element
- 4 Embossed Effect
- 5 Latent Effect
- 6 True Colouring
- 7 Dual Axis CLR
- 8 Single Axis CLR



### Level 3

- 1 Achrograph
- 2 Micro Imagery
- 3 Brick Matrix Manipulation
- 4 Nanotext
- 5 Line Width Modulation (LVM)



KIS Global GmbH  
Oststrasse 34, Duesseldorf Germany 40211  
T: +49-211-3689-255 E: channel@kisglobal.com  
www.kisglobal.com

Ermes srl  
Via Grassilli, 11 - 40012 Calderara di Reno (BO)  
T: +39 051-757040 E: info@ermes-online.it  
www.ermes-online.it



Pioneering SMART Business Operations